



GATEWAY TO EUROPE

YOUR FULL-SERVICE EXPORT SOLUTION
FOR DOING BUSINESS IN EUROPE



TABLE OF CONTENTS

- Introduction
- About Gateway to Europe
- Services
- Industry Partners
- How to Participate
- Contact

INTRODUCTION

Are you planning to do business in Europe?

As the world's largest economy and with more than 500 million consumers, the European Union provides exciting opportunities for fashion-, sports- & lifestyle companies.

However, entering the European market as a non-European company can be challenging, requiring a deep understanding of the market, its potential barriers and the solutions to overcome these barriers.

Looking to expand your brand intercontinentally, We're here to help!

Choose Gateway to Europe for a full-service solution that will help you succeed in the European market.

Our Story



ABOUT GATEWAY TO EUROPE

We have developed a comprehensive export support solution designed to address all required areas of expertise. This full-service solution 'Gateway to Europe' is created to help both large and SME brands to tap into the right sources of support and information, to deal with immediate (regulatory) hurdles, to find clients and to actually deliver the goods to these clients.

Our solution greatly improves your chances of success and helps you save time and costs.

We have already successfully supported many businesses, and through your industry association, you can easily access our comprehensive range of services.

If you're looking to expand your brand intercontinentally, we're here to help!

Contact

Unlocking Your Success in the European Fashion and Lifestyle Landscape

In the ever-evolving world of fashion and lifestyle making a lasting mark in the European market is not just about receiving a one-time piece of advice. It's about forging a partnership that guides you through every twist and turn, putting you at the helm of your European adventure.

At Gateway to Europe, we understand that venturing into the European market is a multi-faceted journey filled with unique challenges and opportunities. Our commitment is to offer you far more than mere consultancy – we're your trusted co-pilots, supporting you in each step of establishing and expanding your brand's presence in Europe.



SERVICES

Get to know our full-service apparel solution

The core element of our concept is the broad and integrated support we provide to fashion exporters covering all of the required services and information.

To deliver a full-service solution we have leveraged our extensive network of relations, partnering with specialists throughout Europe to offer you the best possible support.



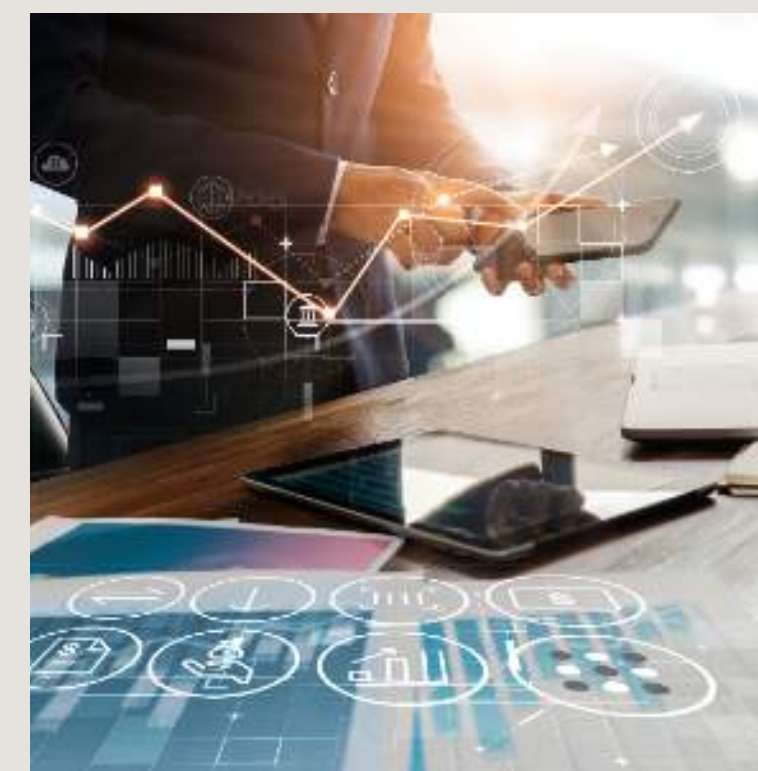
CUSTOMS & VAT

We offer customs and VAT services include tax advisory, corporate services and EU import/VAT representation, as well as advice on how to reduce duties on your exports to Europe.



MARKETING & SALES

We facilitate your journey by leveraging our network of partners to advise on your European marketing and sales strategy.



FINANCE & CREDIT MANAGEMENT

We provide custom finance and credit management services for fashion.



LOGISTICS & FULFILMENT

We advise on logistics and EU market entry, covering distribution, warehousing, imports, VAS and transport.



COMPLIANCE & REGULATIONS

To enable European fashion market entry we will help you to meet essential compliance demands.



INDUSTRY PARTNERS

Gateway to Europe has established an intensive relationship with several industry partners, primarily industry associations in the fashion and sports sectors.

We have developed a unique service model for these associations, creating with them extensions of their member service packages.

Gateway to Europe enables associations to help their members to expand their business. At the same time, a global network of industry associations is an important part of our knowledge base.

Industry Partners

HOW TO PARTICIPATE

Contact

Reach out to us to schedule a free consultation meeting with our experts. During this session, we will assess your needs and objectives.

Quick Scan

We'll conduct a quick scan with you, using a questionnaire to identify your company's specific requirements.

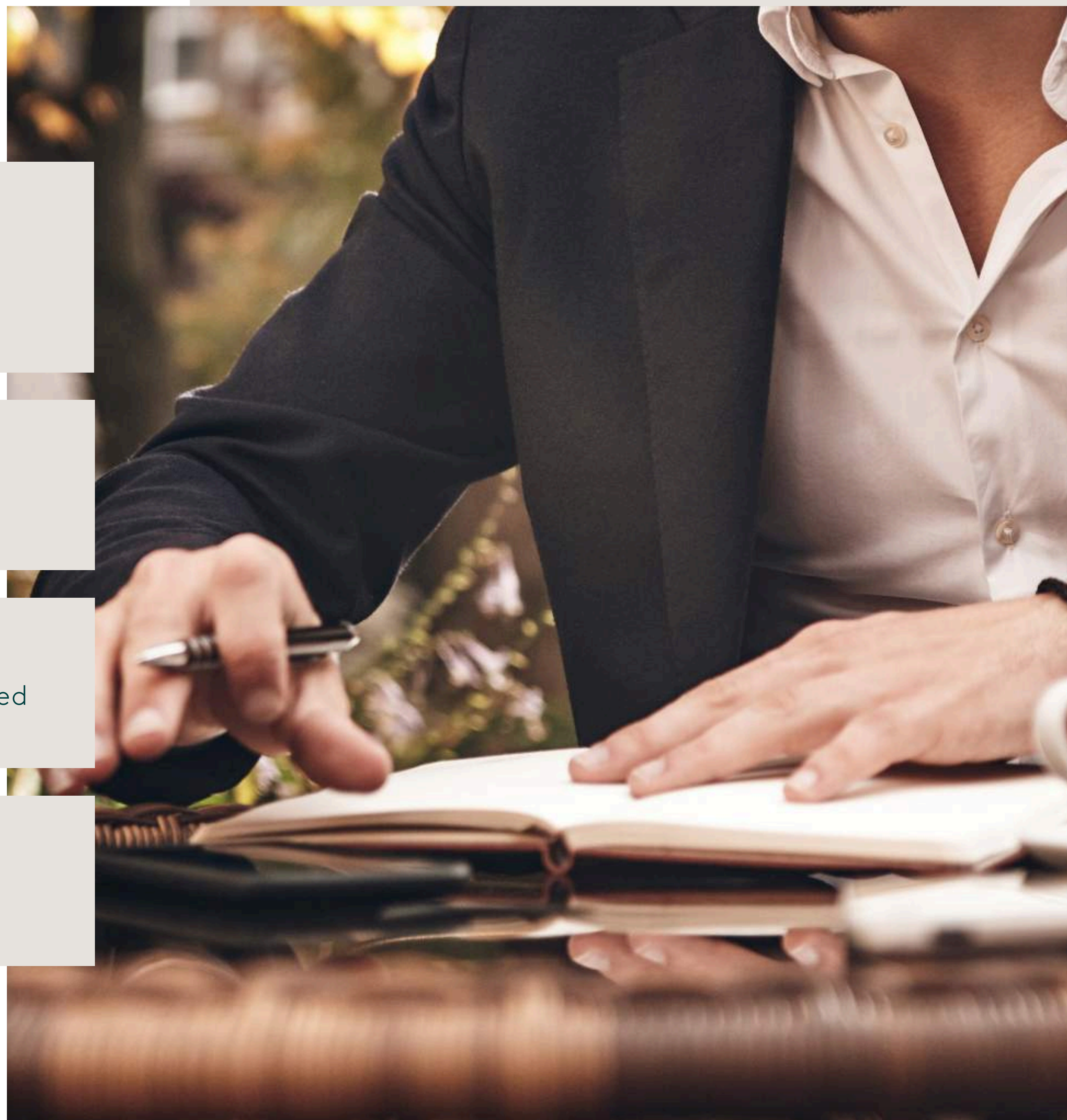
Roadmap

Based on the quick scan results, we'll create a roadmap tailored to your business needs, outlining the necessary services.

Start selling in Europe

We'll support you throughout the whole process, while you take the lead.

Book a meeting





CONTACT

 **Gateway to Europe**

 www.gateway-europe.com

 info@gateway-europe.com

  +31 85 2 388 388

 Wiekenweg 56H
NL-3815 KL Amersfoort
The Netherlands

 | GATEWAY
TO EUROPE